

RESEARCH ARTICLE

Effects of a physical and energetic challenge on male California mice (*Peromyscus californicus*): modulation by reproductive condition

Meng Zhao¹, Theodore Garland, Jr¹, Mark A. Chappell¹, Jacob R. Andrew¹, Breanna N. Harris² and Wendy Saltzman^{1,*}

ABSTRACT

Reproduction strongly influences metabolism, morphology and behavior in female mammals. In species in which males provide parental care, reproduction might have similar effects on fathers. We examined effects of an environmental challenge on metabolically important physiological, morphological and behavioral measures, and determined whether these effects differed between reproductive and non-reproductive males in the biparental California mouse (*Peromyscus californicus*). Males were paired with an ovary-intact female, an ovariectomized female treated with estrogen and progesterone to induce estrus, or an untreated ovariectomized female. Within each group, half of the animals were housed under standard laboratory conditions and half in cages requiring them to climb wire towers to obtain food and water; these latter animals were also fasted for 24 h every third day. We predicted that few differences would be observed between fathers and non-reproductive males under standard conditions, but that fathers would be in poorer condition than non-reproductive males under challenging conditions. Body and fat mass showed a housing condition × reproductive group interaction: the challenge condition increased body and fat mass in both groups of non-reproductive males, but breeding males were unaffected. Males housed under the physical and energetic challenge had higher blood lipid content, lower maximal aerobic capacity and related traits (hematocrit and relative triceps surae mass), increased pain sensitivity and increased number of fecal boli excreted during tail-suspension tests (a measure of anxiety), compared with controls. Thus, our physical and energetic challenge paradigm altered metabolism, morphology and behavior, but these effects were largely unaffected by reproductive condition.

KEY WORDS: Anxiety, Body composition, Fatherhood, Metabolism, Paternal care, Reproduction

INTRODUCTION

Female mammals undergo changes in physiology, morphology and emotionality as a result of becoming mothers (Slattery and Neumann, 2008; Speakman, 2008; Woodside et al., 2012). Although males do not experience pregnancy and lactation, they too might be expected to undergo physiological, morphological and

emotional changes across different reproductive states, especially in species in which males provide significant care for their offspring. Few studies have addressed this possibility; however, fathers in many biparental mammalian species (i.e. in which both parents contribute to offspring care) undergo systematic changes in levels of numerous hormones and neuropeptides, including several that are known to have pronounced effects on energetics, metabolism and behavior (Saltzman and Ziegler, 2014).

Fatherhood can be energetically costly in biparental mammals, corresponding to changes in energetically relevant physiological, morphological and behavioral measures. Prairie vole (*Microtus ochrogaster*) fathers, for example, had lower body mass and less subcutaneous fat than non-fathers (Campbell et al., 2009; Kenkel et al., 2014). Similar to lactating females in many species, prairie vole fathers spent more time feeding during the postpartum period, possibly leading to recovery in body mass (Speakman, 2008; Campbell et al., 2009). Newly paired male prairie voles also showed increased preference for sucrose solution, suggesting that they needed to increase energy intake (Campbell et al., 2009) or possibly that they experienced alterations in taste or in the brain's reward system. In two biparental primates, common marmosets (*Callithrix jacchus*) and cotton-top tamarins (*Saguinus oedipus*), expectant fathers underwent significant increases in body mass across their mate's pregnancy, which is thought to prepare males for the energetic demands of fatherhood (Ziegler et al., 2006). This was followed by a drop in body mass during the postpartum period (Achenbach and Snowdon, 2002; Ziegler et al., 2009).

Fatherhood may also be associated with changes in anxiety-like and depression-like behavior in some biparental mammals, although very few studies have tested this possibility. One study of prairie voles found that fathers displayed more anxiety-like behavior and/or more depression-like behavior than virgin males and sexually experienced males without offspring (Lieberwirth et al., 2013). Another study, however, found lower levels of anxiety-related behaviors in prairie vole fathers than in virgin males (Kenkel et al., 2014).

The California mouse (*Peromyscus californicus*) is a genetically monogamous and biparental rodent in which males may undergo affective and metabolic changes when they become fathers. Fathers engage in all the same parental behaviors as mothers except nursing, and to a similar extent (Dudley, 1974; Gubernick et al., 1993; Cantoni and Brown, 1997; Gubernick and Teferi, 2000; Wright and Brown, 2002; Bredy et al., 2007). Previous studies in our laboratory found that males housed with a non-reproductive female were significantly heavier than those housed with a first-time pregnant female (Saltzman et al., 2015), and fathers showed a significant rise in body mass across their mate's pregnancy, but only if housed with pups from the previous litter (Harris et al., 2011; Saltzman et al., 2015). California mouse fathers also had smaller subcutaneous fat

¹Department of Evolution, Ecology, and Organismal Biology, University of California, Riverside, CA 92521, USA. ²Department of Biological Sciences, Texas Tech University, Lubbock, TX 79409, USA.

*Author for correspondence (Saltzman@ucr.edu)

 W.S., 0000-0002-6760-1308

pads than virgin males (Andrew et al., 2016). Two studies found that California mouse fathers have reduced behavioral responses to stress, compared with males with no previous exposure to pups (Bardi et al., 2011; Chauke et al., 2011); however, other studies reported no differences between fathers and non-fathers in neuroendocrine responses to either acute (Chauke et al., 2011; Harris and Saltzman, 2013) or chronic stressors (De Jong et al., 2013). We also found that virgin males produced significantly more fecal boli than breeding males in the tail-suspension test (a measure of anxiety), had significantly higher blood glucose levels than non-breeding males housed with a tubally ligated female, and significantly lower average testis masses than non-breeding and breeding males (Zhao et al., 2017). However, we did not find any significant effects of reproductive status on males' resting metabolic rate (RMR), maximal oxygen consumption ($\dot{V}_{O_{2,max}}$), food intake (all mass-adjusted), blood leptin levels, pain sensitivity or depression-like behavior (Andrew et al., 2016; Zhao et al., 2017).

In summary, few affective, metabolic or physiological effects of fatherhood have been found in California mice. All of these studies, however, were carried out on animals housed under standard laboratory conditions; we have speculated that more, and more pronounced, effects might occur under more challenging environmental conditions (Zhao et al., 2017). In natural environments, animals face many energetic and physical challenges, such as predation, limited food availability and extreme temperatures (McPhee, 2004), and therefore might be more affected by the additional demands of parenthood, compared with captive animals housed under standard conditions.

In the present study, we subjected adult male California mice to two simultaneous environmental challenges: climbing (required for obtaining food and water) and fasting for 24 h every third day. We aimed to identify the physiological, morphological and behavioral effects of these challenges and to determine if they differed between fathers and non-fathers. We compared morphological (body mass, body composition, organ masses) and physiological measures [blood metabolic markers; plasma insulin, leptin and corticosterone levels; maximal oxygen consumption during forced running ($\dot{V}_{O_{2,max}}$)] between new fathers and non-reproductive adult males housed under both standard and challenging conditions. We also characterized behaviors potentially associated with metabolic condition (food intake, preference for high-fat diet). A tail-suspension test was performed as an index of depression-like and anxiety-like behaviors, and preference for artificial sweetener was assessed to investigate anhedonia (i.e. a reduced ability to experience pleasure from rewarding activities), a common symptom of depression (Pecoraro et al., 2004; Gibson, 2006). Finally, we examined nociceptive responses, an important part of defensive systems influenced by affective state (Vendruscolo et al., 2004). We predicted that few differences would be observed between fathers and non-reproductive males housed under standard laboratory conditions, as in previous studies, but that under challenging conditions, fathers would have decreased body mass and body fat mass, higher food intake, and altered blood glucose and lipid levels, compared with non-reproductive males. We further predicted that the environmental challenges would reveal differences between fathers and non-fathers in pain sensitivity, depression-like and anxiety-like behavior, and preferences for highly palatable food and liquid.

MATERIALS AND METHODS

Animals

California mice, *Peromyscus californicus* (Gambel 1848), were bred in our colony at the University of California, Riverside (UCR)

and were descended from mice from the *Peromyscus* Genetic Stock Center (University of South Carolina, Columbia, SC, USA). Animals were housed in polycarbonate cages (44×24×20 cm) with aspen shavings as bedding and cotton wool as nesting material. Food (Purina 5001 Rodent Chow, LabDiet, Richmond, IN, USA) and tap water were provided *ad libitum*. The colony was on a 14 h:10 h light:dark cycle, with lights on at 05:00 h and lights off at 19:00 h. Room temperature was approximately 21°C and humidity was about 55%. Cages were checked twice daily and changed weekly.

Mice were weaned at 27–30 days of age, prior to the birth of younger siblings. At weaning, animals were ear-punched for individual identification and housed in same-sex groups of three to four related and/or unrelated, age-matched individuals.

Sample sizes were based on prospective power analysis (G*Power 3; Faul et al., 2009), using the magnitude of group differences and the within-group standard errors observed in our previous studies on California mice. All procedures used were in accordance with the *Guide for the Care and Use of Laboratory Animals* and were approved by the UCR Institutional Animal Care and Use Committee. UCR is fully accredited by the Association for Assessment and Accreditation of Laboratory Animal Care (AAALAC).

Experimental design

At 130–175 days of age (154.94±1.29 days, mean±s.e.m.), 64 adult males were randomly assigned to three categories: virgin males (VM, $N=21$; housed with an ovariectomized female and thus without opportunities to copulate), non-breeding males (NB, $N=22$; housed with an ovariectomized female treated with estradiol benzoate and progesterone and thus able to copulate but not breed; see below) and breeding males (BM, $N=21$; housed with a sham-ovariectomized female and thus able to copulate and reproduce). Pair mates in all three groups were no more closely related to each other than first cousins. NB were used to control for mating, and VM were used to control for cohabitation with an adult female. Half of the pairs ($N=31$; 10–11 per reproductive condition) were housed under standard laboratory conditions from birth (Ctrl) and the other half ($N=33$; 10–12 per reproductive condition) were housed under standard laboratory conditions until pairing and moved to challenging conditions (Chal) immediately after pairing, in which they were (1) required to climb towers (see below) in order to obtain food and water, and (2) fasted for 24 h every third day. After the birth of the first litter in each breeding pair (or at a matched time point for VM and NB), animals were left undisturbed for 2–3 days until the beginning of the 14-day testing period (see Fig. 1). At postpartum day 27 or 28, female mates and pups of BM were weighed and their body composition was assessed (see below). Pups were also checked daily for eye opening.

Climbing towers and food restriction

A climbing-exercise paradigm modified from previous studies of laboratory mice (*Mus musculus*) and rats (*Rattus norvegicus*) (Notomi et al., 2001; Mori et al., 2003; Lionikas and Blizard, 2008) was used to subject half of the animals (Chal condition) to a physical and energetic challenge. The challenged mice were housed in cages connected to two wire mesh (hardware cloth of ~5 mm) towers measuring ~8 cm in diameter and ~50 cm in height. Food was located at the top of one tower, and a water bottle was at the top of the other tower. In addition, all food was removed for 24 h at 10:00–11:00 h every third day. Water was available *ad libitum* every day.

				Test day 1	Test day 2	Test day 3	Test day 4	Test day 5	Test day 6	Test day 7	Test day 8	Test day 9	Test day 10	Test day 11	Test day 12	Test day 13	Test day 14	
	Day of birth	PPD1	PPD2	PPD3	PPD4	PPD5	PPD6	PPD7	PPD8	PPD9	PPD10	PPD11	PPD12	PPD13	PPD14	PPD15	PPD16	
Morning			Remove food	Return food	Pain sensitivity	Pain sensitivity	Remove food	Return food	Remove food	Return food	Remove food	Return food	Remove food	Return food	Body mass $V_{O_2,max}$	Body mass $V_{O_2,max}$	Remove food	Return food
Afternoon				Body mass Body comp.	Body mass Body comp.				Glucose and lipid profiles		Tail suspension	Tail suspension				Body mass Body comp.	Decapitation Blood collection Organ masses	
Night					Saccharin preference			Food consumption						High-fat diet preference				

Fig. 1. Timeline of experimental procedures. PPD, postpartum day. For logistical reasons, test procedures shown as occurring on PPD2–16 were performed one day later (i.e. on PPD3–17) for approximately half of the animals in each experimental condition. Removal and return of food was performed only for animals in the challenge condition.

Ovariectomy, sham-ovariectomy and hormone treatment

Female mice were ovariectomized using antiseptic techniques and standard surgical procedures. Briefly, mice were anesthetized with isoflurane gas using a vaporizer. The incision region (1 cm above the genital area) was shaved and sanitized, and a ventral midline incision (approximately 1 cm) was made. The left and right oviducts were clamped tightly with a hemostat at the Fallopian tubes, and the ovaries were removed. All reproductive structures were repositioned back in the abdominal cavity, the abdominal incision was closed with absorbable sutures (Monocryl suture 4-0 FS-2, Ethicon, San Angelo, TX, USA) and the skin was sealed using tissue glue (Vetbond Tissue Adhesive 1469SB, St Paul, MN, USA). After surgery, females were housed individually for 7 days until being paired with a male. At the end of the experiment, ovariectomized females were euthanized by CO₂ inhalation and dissected to check for pregnancy. None had visible fetuses. For sham-ovariectomies, all procedures were identical to those for ovariectomies except that the oviducts were not clamped and the ovaries were not removed.

California mice mate after pairing and again on the day of parturition (Gubernick, 1988). To mimic this pattern, the ovariectomized females from NB were treated with estradiol benzoate (Sigma-Aldrich, St Louis, MO, USA) (0.072 mg, s.c.) 2 days before the breeding males were paired and also on the day when the breeding pairs gave birth; each estrogen treatment was followed 48 h later by treatment with progesterone (Sigma-Aldrich) (0.48 mg, s.c.). Pilot data showed that this treatment paradigm, with estrogen followed by progesterone 48 h later, usually induced mating behaviors in ovariectomized females within 13 h, while untreated ovariectomized females were never observed copulating (M.Z., D. Chow and W.S., unpublished data).

Measurements

Morphology

Body mass

From the time of pair formation until the birth of the first litter in breeding pairs (or a matched time point for VM and NB), all males, as well as the females in breeding pairs, were weighed to the nearest 0.01 g at 14:00–16:00 h twice weekly, at 3–4 day intervals. In addition to providing body-mass data, this allowed us to assess overall health, habituate the animals to handling, and monitor pregnancies through patterns of mass gain in females. Subjects were also weighed between 13:30 and 16:00 h on test days 1, 2, 8, 9 and 13, as well as between 09:00 and 11:00 h on test days 11 and 12 (Fig. 1).

Body composition (days 1, 2 and 13)

Body composition was assessed with an EchoMRI-100 magnetic resonance whole-body analyzer (Echo Medical Systems, Houston, TX, USA) as previously described (Zhao et al., 2017). Lean and fat masses were computed both as absolute values and as percentages of total body mass (analyses using body mass as a covariate yielded similar results). For each measure, the average of days 1, 2 and 13 was used in analysis.

Organ collection (day 14)

Males were decapitated between 13:30 and 16:00 h. Trunk blood was collected in a heparinized weighing boat, and organs [heart, liver, leg muscles (left and right triceps surae), testes (left and right), adrenal glands (left and right) and kidneys (left and right)] were removed and weighed as previously described (Zhao et al., 2017). Blood samples were centrifuged for 12 min at 15,600 *g* and 4°C, and plasma was removed and stored at –80°C for corticosterone assays.

Metabolism, energetics and related behaviors

Food consumption (day 5)

Beginning at the start of the active period (lights-off; 19:00 h) on test day 5, each male's mate (and pups, for BM) was moved to a clean cage next to the home cage for 4 h. The males remained in their home cages (which included climbing towers for Chal males). The food and water bottle were weighed immediately before and after the 4 h test period, and the amounts consumed were determined as the difference between initial and final mass. The bedding was checked before and after the test to confirm that no shredded food was present. Males were reunited with their cage mates in their home cages immediately after the test.

High-fat diet preference (day 11)

Each male was isolated in its home cage for 4 h, starting at the time of lights-off (19:00 h), as described above for the food-consumption test. The food hopper was divided by a steel partition into two compartments, each containing ~100 g of standard diet (13.5% kcal fat, Purina 5001 Rodent Chow, LabDiet) or high-fat diet (43.6% kcal fat, Modified Diet 5001, TestDiet, Richmond, IN, USA). The positions of the two diets were assigned randomly. The food in each part of the hopper was weighed immediately before and after the 4 h test period, and the amount of each diet consumed was determined as the difference between initial and final mass. The bedding was checked before and after the test to make sure food wasting did not bias results (Koteja et al., 2003). The amount of high-fat diet

consumed divided by the overall amount of food consumed was calculated as an index of relative preference for high-fat diet.

Maximum aerobic metabolic rate (days 11 and 12)

Maximal oxygen consumption ($\dot{V}_{O_2, \max}$) was measured as described previously (Chappell and Dlugosz, 2009; Andrew et al., 2016), immediately after weighing on days 11 and 12. Briefly, mice were forced to run in an enclosed running-wheel respirometry chamber. The wheel was rotated from low to high speed until either the O_2 concentration did not increase with increasing exercise intensity or the mouse could not keep up. Flow rates (2400 ml min^{-1}) and gas concentrations were measured every second using Warthog LabHelper software (www.warthog.ucr.edu). Excurrent air was subsampled ($\sim 150 \text{ ml min}^{-1}$), scrubbed of CO_2 and dried with soda lime and Drierite, and sent through an oxygen analyzer. Reference air was taken at the beginning and end of every trial, and a baseline was fitted by linear regression. Oxygen consumption was then calculated with Warthog LabAnalyst (www.warthog.ucr.edu). Instantaneous corrections were used to account for the mixing and wash-out characteristics of the chamber. $\dot{V}_{O_2, \max}$ was determined as highest \dot{V}_{O_2} averaged over 1 min. We tested $\dot{V}_{O_2, \max}$ for repeatability across the 2 days of tests, and the higher of the two values for each animal was used for analysis.

Blood metabolic profiles

Glucose and lipid profiles (day 6)

Mice were fasted for 6 h, at approximately 11:00–17:00 h, immediately after which they were anesthetized with isoflurane and blood was collected from the retro-orbital sinus as previously described (Zhao et al., 2017). Four samples were obtained from each mouse using heparinized capillary tubes. Each of the first two tubes ($40 \mu\text{l}$ each) was immediately used to determine total cholesterol (TC), high-density lipoprotein cholesterol (HDL), triglyceride and ratio of TC to HDL (TC/HDL) in whole blood using an automated analyzer (model LDX; Cholestech Corporation, Hayward, CA, USA) and Lipid Profile GLU cassettes (item number 10-991). We did not formally validate the Cholestech LDX analyzer for *P. californicus*; however, it has been validated extensively for human samples (details in package insert), within the following ranges: TC, $100\text{--}500 \text{ mg dl}^{-1}$; HDL, $15\text{--}100 \text{ mg dl}^{-1}$; triglyceride, $45\text{--}650 \text{ mg dl}^{-1}$. This analyzer has also been used in several other rodent studies (Hammad et al., 2003; Stedman et al., 2006; Meek et al., 2014). The third sample ($<20 \mu\text{l}$) was used to measure glucose concentration in whole blood twice with a Contour Next blood glucose monitoring system (Mishawaka, IN, USA). We did not formally validate this system for *P. californicus*; however, it has been validated for humans (details in user guide), can measure glucose in the range of $20\text{--}600 \text{ mg dl}^{-1}$ and has been used in other studies in rodents (Fonken et al., 2010; Carvas et al., 2012; Croce et al., 2013). The fourth tube ($70 \mu\text{l}$) was centrifuged immediately for 12 min ($15,600 \text{ g}$, 4°C), hematocrit was measured, and plasma was removed and stored at -80°C for leptin and insulin assays.

Leptin ELISA

Leptin concentrations in plasma were determined using a laboratory mouse (*Mus*) leptin enzyme-linked immunosorbent assay (ELISA) kit (catalog no. 90030; Crystal Chem, Downers Grove, IL, USA) that we previously validated for *P. californicus* (Zhao et al., 2017). All samples were assayed in triplicate at the recommended volume ($5 \mu\text{l}$). The kit standards generate a curve adequate to measure leptin concentrations between 0.2 and 12.8 ng ml^{-1} . Intra-assay

coefficient of variation (CV) was 5.23% , and inter-assay CV was 4.08% for a plasma pool from adult male California mice. Each assay included samples from animals in each of the six experimental groups (2 housing conditions \times 3 reproductive groups).

Insulin ELISA

Insulin concentrations in plasma were determined using a mouse (*Mus*) insulin ELISA kit (catalog no. 90080; Crystal Chem) previously validated for *P. californicus* (Zhao et al., 2017). All samples were assayed in triplicate at the recommended volume ($5 \mu\text{l}$). The kit standards generate a curve adequate to measure insulin concentrations between 0.1 and 12.8 ng ml^{-1} , and intra- and inter-assay CVs were 5.07 and 7.84% , respectively. Each assay included samples from animals in each of the six groups.

To analyze insulin–glucose dynamics, we calculated two surrogate measures of insulin sensitivity: the homeostatic model assessment of insulin resistance $\{\text{HOMA-IR}, [\text{insulin (mU l}^{-1}) \times \text{glucose (mmol l}^{-1})] / 22.5\}$, and the quantitative insulin check index of insulin sensitivity $\{\text{QUICKI}, 1 / [\log \text{insulin (mU/l)} + \log \text{glucose (mg dl}^{-1})]\}$, both based on fasted glucose and insulin levels (Borai et al., 2011; Bowe et al., 2014).

Corticosterone radioimmunoassay

Plasma corticosterone concentration for each male was determined using a radioimmunoassay kit (catalog no. 07120103; MP Biomedicals, Solon, OH, USA) previously validated for *P. californicus* (Chauke et al., 2011). The assay was run according to the manufacturer's instructions, but the assay standard curve was extended down from 25 to 12.5 ng ml^{-1} ($90\text{--}91\%$ bound) and went to 1000 ng ml^{-1} ($20\text{--}21\%$ bound). Samples were diluted anywhere from $1:200$ to $1:800$ in order to ensure that values were contained within the curve. All samples were diluted and run in duplicate. Intra- and inter-assay CVs were calculated using a kit-provided control and were 1.97 and 3.24% , respectively.

Behavioral indicators of pain sensitivity, depression and anxiety

Pain sensitivity (days 2 and 3)

Tests were administered between 09:00 and 11:00 h using a protocol previously described (Zhao et al., 2017). Briefly, animals were placed in a ventilated Plexiglas cylinder ($6 \text{ cm height} \times 20 \text{ cm diameter}$) on a hotplate (Lab-Line Instruments, Melrose Park, IL, USA) maintained at $44.3 \pm 0.2^\circ\text{C}$. The time from placement on the hotplate until shaking, licking or sustained lift of either of the hindpaws, whichever occurred first, was recorded as an index of latency to pain response. Animals were removed from the hotplate immediately after showing any of the above behaviors, or after 120 s if they showed no responses. In addition to latency to nociceptive behavior, we recorded the number of fecal boli and urine pools deposited on the hotplate, as commonly performed for the open-field test, a standard test of anxiety-like behavior (Archer, 1973; Flint et al., 1995; Bronikowski et al., 2001; Colman et al., 2007).

Tail suspension (days 8 and 9)

Between 14:00 and 16:00 h, mice were suspended by their tails from a ring stand for 6 min , and the duration of immobility was measured as previously described (Zhao et al., 2017). Briefly, the ring stand was placed on an activity detector unit (MAD-1; Sable Systems International, Henderson, NV, USA) interfaced to a Macintosh computer equipped with an A–D converter and LabHelper software. Activity was recorded every 0.004 s . LabAnalyst software was used for baseline correction and calculation of activity duration (Malisch

et al., 2009). Duration of time spent immobile is interpreted as a positive indicator of depression-like behavior (Cryan et al., 2005). In addition, we recorded the number of fecal boli produced during the 6 min of testing.

Saccharin preference (day 2)

Males' preference for saccharin (Sweet'N Low; Cumberland Packing Corporation, Brooklyn, NY, USA) solution (0.2% w/v in water) versus water was assessed as a measure of anhedonia, as previously described (Zhao et al., 2017). Briefly, starting at the time of lights-off (19:00 h), each mouse was separated from its cage mate(s) for 4 h, as described above, with access to standard chow and two plastic syringes, one containing ~35 ml of water and the other containing ~35 ml of 0.2% saccharin solution. Positions of the two types of liquid were randomly assigned. The syringes were weighed immediately before and after the 4 h test period. The amount of consumed saccharin solution divided by the overall liquid consumption was calculated as an index of relative preference for saccharin solution. We have previously found that male California mice in all reproductive conditions tend to prefer the saccharin solution over water (Zhao et al., 2017).

Data analysis

All traits were analyzed by analysis of covariance (ANCOVA) using SPSS. Age and/or other potentially relevant variables (see Results) were used as covariates. All tests were two-tailed. For each analysis, residuals were checked for (1) skewness and (2) homogeneity of variance using Levene's test, and dependent variables were transformed as needed. For traits measured twice and for tests conducted on two successive days, as well as for paired (right and left) organs, values from the two trials or two organs were compared using a paired *t*-test and a Pearson correlation to gauge repeatability (Table 1), and mean values were used for subsequent analyses (except for $\dot{V}_{O_{2,max}}$). For the breeding pairs, we also performed ANCOVAs to determine if litter size, pup development and mothers' body composition differed between animals in the Ctrl and Chal conditions.

Excluding such nuisance variables as age, this study generated 145 *P*-values, 48 of which were <0.05. These tests include a substantial amount of non-independence because the same individuals were

measured for all traits, some traits were correlated, and many tests were inter-related. To compensate for non-independence in multiple related tests, we used the Adaptive False Discovery Rate procedure as implemented in PROC MULTTEST in SAS 9.4 (SAS Incorporated, Cary, NC, USA). Based on this procedure, the 43 smallest *P*-values would have adjusted *P*-values <0.05 (the highest being 0.019). For simplicity, all *P*-values reported in the text and tables are raw values, not adjusted for multiple comparisons; however, we refer to *P*-values ≤0.019 as 'significant' and those between 0.019 and 0.05 as 'nominally significant'.

RESULTS

Morphology

Body mass

To examine changes in body mass within individuals, we analyzed all masses recorded between the time of pairing and parturition (for breeding males) or a comparable time point (for virgin males and non-breeding males). For each male, we computed a least-squares linear regression of body mass on measurement day. We analyzed the slope of this regression as the dependent variable in an ANCOVA with age at first weighing as a covariate. We found a nominally significant difference between Chal and Ctrl, with prepartum body mass increasing more rapidly in Chal males than in Ctrl males (*P*=0.043). Neither the main effect of reproductive group nor the housing condition×reproductive group interaction was significant (Table 2).

We also analyzed mean body mass during the test days and again found no main effect of reproductive group; however, we found a significant main effect of housing condition, with Chal heavier than Ctrl (*P*<0.0001). The interaction between housing and reproductive conditions was nominally significant (*P*=0.037): both VM and NB had higher body mass in Chal than in Ctrl, whereas BM did not (Table 2, Fig. 2).

Body composition

Squared fat mass was significantly higher in Chal compared with Ctrl (*P*<0.0001) when using age as a covariate, with an interaction between housing and reproductive conditions (*P*=0.019) (Table 2, Fig. 3). Similar to body mass, both VM and NB had higher fat mass in Chal than in Ctrl, whereas BM did not (interaction *P*=0.019). When

Table 1. Results of Pearson correlations (Spearman for urine and feces production) and paired *t*-tests comparing values from the two trials for tests conducted on two successive days, and for paired organ masses

Trait	Transform	<i>N</i> of paired observations	<i>r</i> of correlation	<i>P</i> of correlation	<i>t</i> of paired <i>t</i> -test	<i>P</i> of paired <i>t</i> -test
Pain sensitivity: latency (s)	log ₁₀	57	0.313	0.018	0.827	0.412
Pain sensitivity: number of urine pools	None	65	0.454	<u>1.44×10⁻⁴</u>	0.341	0.734
Pain sensitivity: number of fecal pellets	None	65	0.455	<u>1.38×10⁻⁴</u>	-0.741	0.462
Tail suspension: duration of immobility (min)	None	64	0.722	<u>1.67×10⁻¹¹</u>	-1.289	0.202
Tail suspension: number of fecal pellets	None	64	0.399	0.001	-0.768	0.445
$\dot{V}_{O_{2,max}}$ (ml min ⁻¹)	None	64	0.879	<u>1.39×10⁻²¹</u>	0.972	0.335
Glucose (mg dl ⁻¹)	None	65	0.970	<u>1.28×10⁻⁴⁰</u>	-0.337	0.737
Fat mass (g)	None	61	0.992	<u>3.56×10⁻⁵⁵</u>	1.845	0.070
Lean mass (g)	None	61	0.966	<u>3.02×10⁻³⁶</u>	-1.035	0.305
Fat mass (%)	None	61	0.994	<u>5.76×10⁻⁵⁹</u>	4.515	<u>3.00×10⁻⁵</u>
Lean mass (%)	None	61	0.977	<u>3.67×10⁻⁴¹</u>	-0.542	0.590
Triceps surae mass (g)	None	64	0.851	<u>5.85×10⁻¹⁹</u>	-1.023	0.310
Testis mass (g)	None	64	0.977	<u>2.64×10⁻⁴³</u>	1.704	0.093
Adrenal mass (g)	None	63	0.858	<u>2.67×10⁻¹⁹</u>	7.575	<u>2.16×10⁻¹⁰</u>
Kidney mass (g)	None	64	0.985	<u>2.72×10⁻⁴⁹</u>	4.245	<u>7.30×10⁻⁵</u>

Positive *t* values indicate that trial 1>trial 2 or, for paired organs, left>right. Significant *P* values (*P*≤0.019, when modified for Adaptive False Discovery Rate) are both bold and underlined.

Table 2. Results of ANCOVAs comparing the three reproductive groups (breeding male, non-breeding male, virgin male) in the two housing conditions (control, challenge)

	Transform	d.f.	F			P		
			Group	Condition	Group×condition	Group	Condition	Group×condition
Pain sensitivity: latency (s)	log ₁₀	55	0.528	8.635	0.248	0.593	0.005	0.782
Pain sensitivity: number of urine pools	Rank	56	1.279	5.476	0.296	0.286	<u>0.023</u>	0.745
Pain sensitivity: number of fecal boli	Rank	56	0.073	1.000	0.218	0.930	0.322	0.804
Tail suspension: duration of immobility (min)	None	56	0.047	2.476	0.187	0.954	0.121	0.830
Tail suspension: number of fecal boli	Rank	56	0.773	6.117	1.187	0.466	0.016	0.313
$\dot{V}_{O_2,max}$ (ml min ⁻¹)	None	55	0.342	12.008	0.386	0.712	0.001	0.681
Hematocrit (%)	None	57	0.521	9.690	1.912	0.597	0.003	0.157
Glucose (mg dl ⁻¹)	None	57	0.197	0.389	0.798	0.822	0.535	0.455
TC (mg dl ⁻¹)	None	47	2.660	48.172	1.238	0.080	1.01×10⁻⁸	0.299
HDL (mg dl ⁻¹)	None	42	0.350	6.215	0.200	0.707	0.017	0.820
TRG (mg dl ⁻¹)	None	51	0.488	17.163	2.194	0.617	1.29×10⁻⁴	0.122
Circulating leptin (ng dl ⁻¹)	log ₁₀	54	0.597	8.336	1.548	0.554	0.006	0.222
Circulating insulin (ng dl ⁻¹)	log ₁₀	56	0.295	3.618	0.147	0.746	0.062	0.863
Circulating corticosterone (ng dl ⁻¹)	log ₁₀	54	1.246	2.900	0.438	0.296	0.094	0.648
HOMA-IR	log ₁₀	58	0.376	12.453	0.117	0.688	0.001	0.890
QUICKI	log ₁₀	58	0.458	11.410	0.109	0.635	0.001	0.897
Food consumption (g)	Rank	56	0.569	3.602	1.705	0.569	0.063	0.191
High-fat diet preference (%)	Squared	54	0.337	1.413	0.054	0.716	0.240	0.948
Saccharin preference (%)	Rank	57	0.649	0.811	0.889	0.526	0.372	0.417
Fat mass (g)	Squared	57	0.461	18.178	4.249	0.633	7.60×10⁻⁵	0.019
Lean mass (g)	None	57	0.235	2.157	1.209	0.791	0.147	0.306
Fat mass (%)	Squared	57	0.292	17.159	2.328	0.715	1.43×10⁻⁴	0.105
Lean mass (%)	Rank	57	0.409	32.186	3.284	0.666	4.90×10⁻⁷	<u>0.045</u>
Heart mass (g)	None	56	0.004	3.266	1.117	0.996	0.076	0.334
Liver mass (g)	Square root	54	0.447	11.353	0.147	0.642	0.001	0.864
Spleen mass (g)	Rank	52	0.214	2.159	0.493	0.808	0.148	0.613
Triceps surae mass (g)	Rank	54	0.036	20.110	0.067	0.965	3.90×10⁻⁵	0.935
Testis mass (g)	None	55	1.441	33.685	2.291	0.246	3.33×10⁻⁷	0.111
Adrenal mass (g)	log ₁₀	54	1.123	0.793	2.764	0.271	0.185	0.071
Kidney mass (g)	log ₁₀	55	0.417	0.285	0.587	0.661	0.596	0.559
Prepartum body mass slopes	None	57	0.138	15.245	3.508	0.872	2.52×10⁻⁴	<u>0.037</u>
Postpartum body mass mean (g)	None	58	0.088	4.295	0.317	0.916	<u>0.043</u>	0.730

Significance levels, estimated marginal means and associated standard errors from ANCOVAs are reported. See text for covariates used in various analyses. TC, total cholesterol; HDL, high-density lipoprotein cholesterol; TRG, triglyceride; HOMA-IR, insulin sensitivity calculated from homeostatic model assessment of insulin resistance; QUICKI, insulin sensitivity calculated from quantitative insulin check index of insulin sensitivity. Significant *P* values ($P \leq 0.019$, when modified for Adaptive False Discovery Rate) are both bold and underlined. Nominally significant *P* values ($0.019 < P < 0.05$) are underlined but not bold.

expressed as percentage of total body mass, squared per cent fat mass was significantly higher in Chal compared with Ctrl ($P=0.0001$); however, the interaction effect was no longer significant.

No significant effects were found for absolute lean mass. When expressed as a percentage of total body mass, however, per cent lean mass was significantly lower in Chal compared with Ctrl

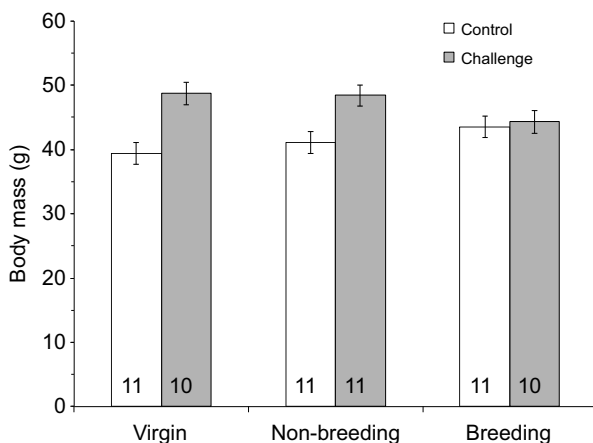


Fig. 2. Estimated marginal means and standard errors of postpartum body mass, adjusted for age, in adult male California mice (*Peromyscus californicus*). ANCOVA revealed an interaction between housing and reproductive conditions ($P=0.037$) and a main effect of housing condition ($P<0.001$). Sample sizes are shown within the bars.

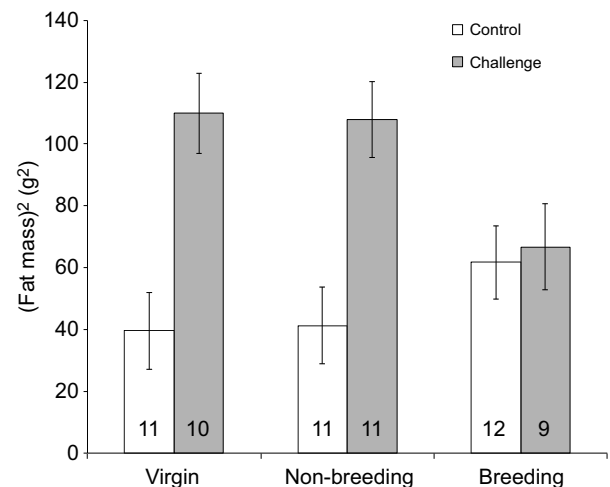


Fig. 3. Estimated marginal means and standard errors of squared fat mass, adjusted for variation in age. ANCOVA revealed an interaction between housing and reproductive conditions ($P=0.019$) and a main effect of housing condition ($P<0.0001$). Sample sizes are shown within the bars.

($P=4.90 \times 10^{-7}$). The interaction between housing and reproductive condition was significant for per cent lean mass ($P=0.045$), with both VM and NB, but not BM, showing lower per cent lean mass in Chal compared with Ctrl. Neither lean mass nor per cent lean mass showed a significant main effect of reproductive group.

Note that fat mass and per cent fat mass had positively skewed residuals, and transforms did not eliminate the skewness, but the main results are clear (Fig. 4).

Organ masses

Body mass was used as a covariate in all organ-mass analyses. Masses of left and right triceps surae, testes, adrenals and kidneys all showed high correlations within individual animals, and similar to Zhao et al. (2017), right adrenals and kidneys were significantly heavier than left adrenals and kidneys (Table 1), as has been seen in other mammals and with other organs (e.g. Idelman, 1978; Coleman et al., 1998). One BM from the Ctrl condition had much higher ($\sim 2\times$) triceps surae mass than the other Ctrl males and was excluded from analysis as an outlier. Males from Chal had higher square root-transformed liver mass

($P=0.001$), higher rank-transformed mean triceps surae mass ($P=3.9 \times 10^{-5}$), and lower average testis mass ($P=3.33 \times 10^{-7}$) than Ctrl. No other organ masses differed among reproductive groups or between housing conditions, and no interactions occurred (Table 2). Note that mean triceps surae mass had a skewed distribution and significant heterogeneity of variance, and transforms did not eliminate the heterogeneity or skewness (Fig. 4).

Metabolism/energetics and related behaviors

Blood glucose, lipid and cholesterol profiles

An ANCOVA of hematocrit, with age as a covariate, indicated a significant difference between housing conditions ($P=0.003$), with Ctrl higher than Chal (Table 1). Hematocrit was not influenced by a main effect of reproductive group or a housing condition \times reproductive group interaction.

Fasted plasma glucose concentrations were highly correlated in the two successive blood samples ($r=0.970$), but did not differ significantly among groups (Table 1). Chal had higher fasted TC ($P=1.01 \times 10^{-8}$), HDL ($P=0.017$) and rank-transformed triglyceride

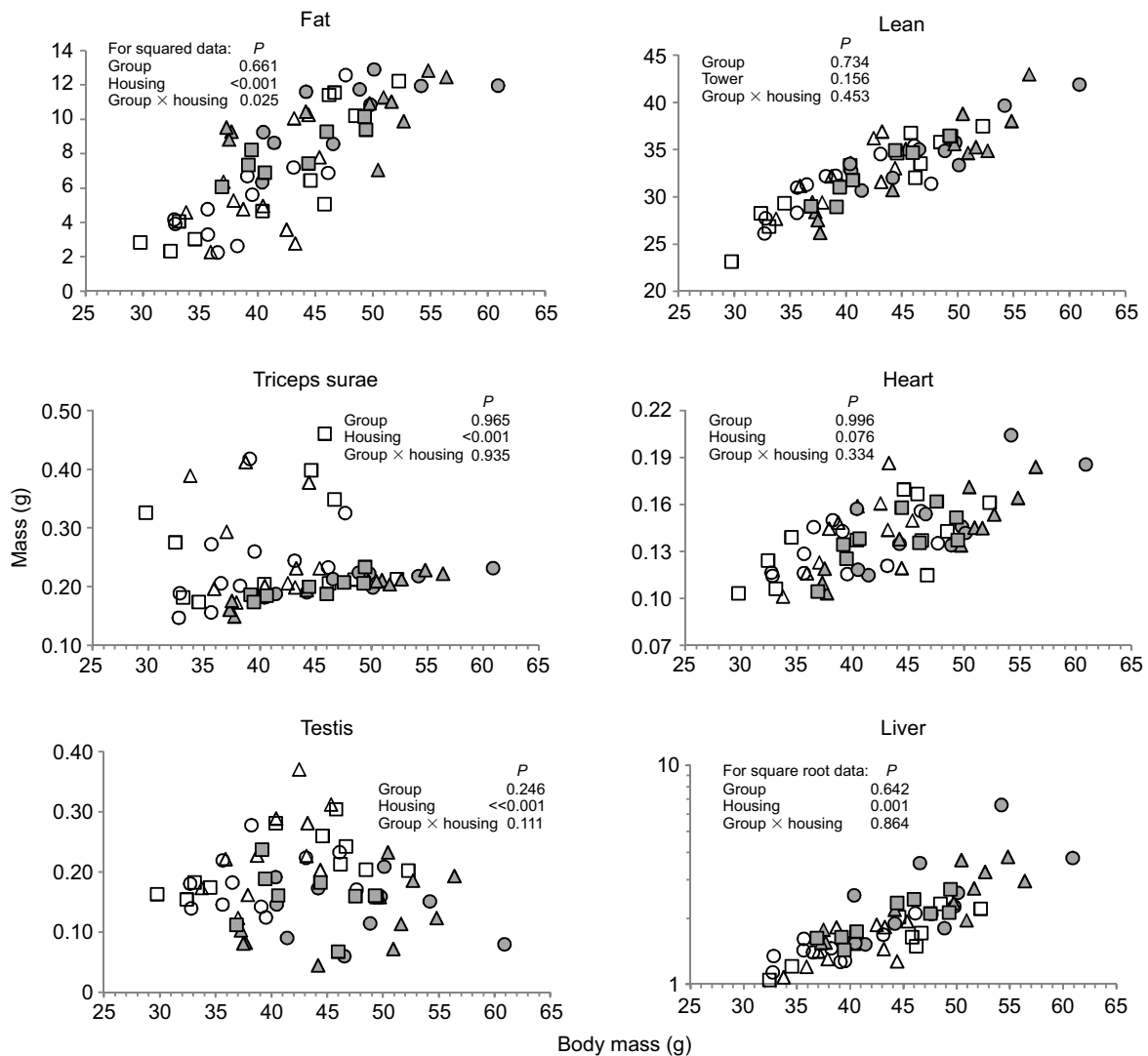


Fig. 4. Organ masses and body composition of males. ANCOVA revealed that fat mass, triceps surae mass, testis mass and liver mass all differed significantly between control (open symbols, $N=34$) and challenge (filled symbols, $N=30$) conditions, but lean mass and heart mass did not. Fat mass and triceps surae mass also showed higher variance among challenge individuals than among control animals. Liver mass is shown on a log₁₀-transformed y-axis. Circles, virgin males ($N=21$); triangles, non-breeding males ($N=22$); squares, breeding males ($N=21$). (One breeding male in the control condition was an outlier with very high triceps surae mass, and was excluded from the graph and statistical analyses of this trait.)

levels ($P=0.0001$) than Ctrl (Table 2), but none of these measures was affected by a significant main effect of reproductive group or a housing condition×reproductive group interaction. Note that TC had a skewed distribution and significant heterogeneity of variance, and transforms did not eliminate these patterns.

Circulating leptin, insulin and corticosterone concentrations

An ANCOVA (with age and per cent fat mass as covariates) on \log_{10} -transformed plasma leptin concentration found a positive effect of per cent fat mass ($P=4.72\times 10^{-8}$) and a significant difference between housing conditions ($P=0.006$), with Chal having higher leptin levels than Ctrl (Table 2); however, no main effect of reproductive group or housing condition×reproductive group interaction was found.

For \log_{10} -transformed fasted plasma insulin concentration, ANCOVA (with age and body mass as covariates) revealed a positive effect of body mass ($P=0.001$) but no main effects of housing conditions or reproductive groups, and no housing condition×reproductive group interaction (Table 2). When analyzed without body mass as a covariate, \log_{10} -transformed fasted plasma insulin concentration was significantly higher in Chal compared with Ctrl ($P=0.0005$).

For \log_{10} -transformed baseline plasma corticosterone concentration, ANCOVA (with age, time of day and time elapsed from disturbance to decapitation as covariates) revealed a positive effect of time of day ($P=0.001$), but no main effects of housing conditions or reproductive groups, and no housing condition×reproductive group interaction (Table 2).

Surrogate measures of insulin sensitivity

\log_{10} -transformed HOMA-IR was higher in Chal than in Ctrl ($P=0.000824$). Chal also had lower QUICKI ($P=0.00131$) than Ctrl (Table 2). Both of these measures indicated that insulin sensitivity was lower in Chal than in Ctrl. Neither HOMA-IR nor QUICKI was significantly affected by reproductive group or by a housing condition×reproductive group interaction.

Food consumption

An ANCOVA (with age and body mass as covariates) indicated that food consumption did not differ between housing conditions or among reproductive groups and was not affected by a housing condition×reproductive group interaction (Table 2).

High-fat diet preference

Preference for high-fat diet did not differ between housing conditions or among reproductive groups and was not affected by a housing condition×reproductive group interaction (Table 2). In general, males did not consistently prefer high-fat diet over standard diet (grand mean±s.e.m. 0.660 ± 0.042).

Maximum aerobic metabolic rate

Measurements of $\dot{V}_{O_{2,max}}$ were highly repeatable within individuals and did not differ between the two days. ANCOVA (with age and body mass as covariates) indicated a positive effect of body mass ($P<3\times 10^{-5}$) and a significant difference between housing conditions ($P<0.0015$), with Chal lower than Ctrl (Table 2). $\dot{V}_{O_{2,max}}$ was not affected by reproductive group or by an interaction between housing condition and reproductive group.

Pain sensitivity, depression-like behavior and anxiety-like behavior

Pain sensitivity

Individual animals' latencies to nociceptive behavior on the two successive testing days were significantly correlated ($r=0.313$) and

not significantly different from one another (Table 1). An ANCOVA was conducted on \log_{10} -transformed mean values from each male, with age and body mass as covariates, and revealed a significant difference between housing conditions ($P=0.005$), with Chal having a shorter latency to the pain response (i.e. a lower pain threshold) than Ctrl (Table 2). The main effect of reproductive group and the housing condition×reproductive group interaction were not significant.

The numbers of urine pools excreted on the two successive testing days were significantly correlated ($r=0.454$) and not significantly different from one another (Table 1). An ANCOVA of rank-transformed mean values with age and body mass as covariates found nominally fewer urine pools in Chal than in Ctrl (Table 2). The numbers of fecal boli expelled on the two successive testing days were also positively correlated ($r=0.340$; Table 1). We found no significant difference between reproductive groups and no significant housing condition×reproductive group interaction (Table 2).

Tail-suspension test

The durations of immobility on the two successive testing days were significantly correlated ($r=0.722$) within individual animals and not significantly different (Table 1). An ANCOVA conducted on rank-transformed mean values (with age and body mass as covariates) indicated no significant differences between housing conditions or among reproductive groups, and the housing condition×reproductive group interaction was not significant (Table 2).

Numbers of fecal boli expelled on the two successive testing days were correlated ($r=0.399$) and not significantly different from one another (Table 1). Mean values were used for comparing groups. An ANCOVA (with age and body mass as covariates) revealed a positive effect of body mass on rank-transformed fecal boli number ($P=0.026$) and a significant difference between housing conditions, with Chal producing more boli than Ctrl ($P=0.016$; Table 2: the effect disappeared without body mass as a covariate). Number of fecal boli was not influenced by a significant main effect of reproductive group or a housing condition×reproductive group interaction.

Note that both duration of immobility and number of fecal boli had skewed distributions and significant heterogeneity of variance, and transforms did not eliminate these statistical complications.

Saccharin preference

Preference for saccharin solution over water did not differ between housing conditions or among reproductive groups and was not affected by a housing condition×reproductive group interaction (Table 2). In general, males did not consistently prefer the saccharin solution over water (grand mean±s.e.m. 0.650 ± 0.037).

Maternal morphology and pup development

Neither litter size at weaning (range 1–3, mean±s.e.m. 2.0 ± 0.1) nor day of eye opening of first pup (15.6 ± 0.7) differed between offspring of breeding males in the Ctrl and Chal conditions. In both mothers and pups, however, several measures of body composition differed at the time of weaning (postpartum day 27). Chal mothers had nominally lower body mass ($P=0.030$; Ctrl 49.57 ± 1.19 g, Chal 44.81 ± 0.93 g) and significantly lower lean mass ($P=0.009$; Ctrl 39.86 ± 0.71 g, Chal 34.82 ± 0.75 g) than Ctrl mothers. Similarly, Chal pups had lower mean mass ($P=0.016$; Ctrl 19.15 ± 0.46 g, Chal 13.39 ± 1.07 g) but not total litter mass, as well as lower per cent lean mass, than Ctrl pups ($P=0.017$; Ctrl 15.48 ± 0.29 g, Chal 11.28 ± 0.78 g) when using mother's age and body mass as covariates.

Chal pups also had lower fat mass than Ctrl pups with only mother's age as a covariate ($P=0.001$), but the effects disappeared when including mother's body mass as a covariate, which had a nominally significant effect on pups' fat mass ($P=0.034$).

DISCUSSION

Fatherhood in biparental mammals is thought to be energetically and metabolically expensive, at least in some species (Achenbach and Snowdon, 2002; Campbell et al., 2009; Ziegler et al., 2009). Correspondingly, fathers in these species, including the California mouse, typically undergo changes in circulating levels of several metabolically important hormones and/or their receptors, including androgens, progesterone and prolactin, across their mate's pregnancy and postpartum period (Gubernick and Nelson, 1989; Trainor et al., 2003; Saltzman and Ziegler, 2014; Perea-Rodriguez et al., 2015). In the present study, we characterized energetically and metabolically relevant physiological, morphological and behavioral measures in breeding, non-breeding and virgin male California mice housed under both standard laboratory conditions and energetically and physically challenging conditions, in which (1) mice had to climb wire-mesh towers to obtain food and water, and (2) food was removed for 24 h every third day. Overall, we found that the climbing and fasting paradigm had numerous morphological, physiological and behavioral effects on male mice but, contrary to our predictions, very few of these effects were modulated by the males' reproductive condition.

Body composition

After being paired with a female, males in the challenge condition underwent more rapid increases in body mass than those housed in standard cages. Subsequently, following the birth of the breeding males' first litters, fatherhood apparently limited the ability of males to increase their fat mass under energetically challenging conditions.

In several biparental species, fathers gain body mass during their mate's pregnancy and lose mass during the period of infant care (reviewed in Saltzman and Ziegler, 2014), suggesting that paternal care is energetically costly, even under laboratory conditions. In California mice, however, we previously found that fathers gain body mass across their mates' second or subsequent pregnancies, corresponding to the period of care of the previous litter, but not during their mates' first pregnancies or other pregnancies during which no litter is present (Harris et al., 2011; Saltzman et al., 2015). In a recent study, moreover, body mass, fat mass and food consumption in California mouse fathers were positively correlated with litter size (Zhao et al., 2017). These findings, together with the results of the present study, suggest that male California mice gain body mass and fat, presumably due to changes in food consumption and/or energy expenditure, in response to (potential) energetic challenges (i.e. presence of offspring, repeated fasting, climbing exercise). This pattern probably reflects an adaptive response to cues signalling actual or potential increases in energetic demand in natural environments. In a laboratory setting, in contrast, the energetic demands of parental care or climbing exercise alone may be easily offset by the available food supply (even under our food-restriction paradigm), allowing animals to not only maintain but build their fat reserves during periods of increased demand. Our findings further suggest that this ability was constrained by the energetic demands of fatherhood.

Food restriction can decrease body mass, body fat content and resting oxygen consumption, and alter mass of several organs, in laboratory rats and mice, depending on the restriction paradigm and strain or species of animals (Rothwell and Stock, 1982; Santos-

Pinto et al., 2001; Faulks et al., 2006; Colman et al., 2007; Sohal et al., 2009). In a study of *Mus*, however, Li et al. (2010) found that food-restricted animals that were provided with a limited amount of food 2 h before lights-off each day ate significantly more than *ad libitum*-fed controls immediately following daily food provisioning. Food-restricted animals in that study, as in ours, had higher body mass and fat mass than controls. In another study, rats under food restriction ate fewer meals but consumed more food during each meal and spent more time eating per meal than rats fed *ad libitum* (Duffy et al., 1989). In contrast to the mouse and rat studies, however, we did not find any significant effects of housing or reproductive condition on food consumption. This might reflect a limitation of our experimental design in that that we measured food consumption over only a single 4 h period (to avoid more prolonged separation of males from their mates and pups), which might be too short to detect any difference. In addition, if animals housed under challenging conditions increased their food intake, relative to control animals, when food was returned after their 24 h fasting periods every third day, this pattern would not have been detected by our one-time food intake measurement on test day 5, when food was available *ad libitum*.

Blood metabolic profile and liver mass

In our previous study (Zhao et al., 2017), virgin males had higher blood glucose concentrations, nominally higher plasma insulin concentrations, and nominally higher insulin sensitivity than non-breeding males, while neither group differed from breeding males. In contrast, none of these measures differed significantly among reproductive conditions in the current study. This difference might be accounted for by differences between the two experiments in the composition of the virgin and non-breeding groups. In the earlier study, virgin males were housed with another male and non-breeding males were housed with a tubally ligated female. In the current experiment, to better control for cohabitation with a female, males in the virgin group were housed with an ovariectomized female and non-breeding males were housed with an ovariectomized female treated with estrogen and progesterone. Testosterone can improve insulin sensitivity (Varlamov et al., 2015), increase fat oxidation and lipolysis (Santosa and Jensen, 2015), reduce gluconeogenesis, and increase glycogen synthesis and storage in the liver, thereby lowering circulating glucose levels (Shen and Shi, 2015). Cohabitation with a female (current study) might increase testosterone levels, compared with cohabitation with a male (previous study) [e.g. Mongolian gerbil (Brown et al., 1995), Djungarian hamster (Reburn and Wynne-Edwards, 1999), cotton-top tamarin (Ziegler and Snowdon, 2000)], potentially leading to increased insulin sensitivity. Although we did not measure testosterone levels in either the present experiment or the previous one, we did find that virgin males in the previous study (housed with another virgin male), but not in the current one (housed with an ovariectomized female), had significantly lower testis masses than males housed with females, consistent with a possible effect of testosterone on insulin sensitivity.

In contrast to reproductive condition, housing condition influenced insulin sensitivity in the present study: both HOMA-IR and QUICKI (see Materials and methods) indicated that males housed under standard laboratory conditions had higher insulin sensitivity than those housed under challenging conditions, although neither blood glucose nor plasma insulin levels differed significantly. Males housed under standard conditions also had higher testis masses than those in the challenge condition, again raising the possibility that group differences in testosterone levels

might have contributed to differences in insulin sensitivity. The high leptin levels in the challenged mice also might have contributed to their lower insulin sensitivity, as insulin resistance can be exacerbated by hyperleptinemia (Chen et al., 2017). The combination of high leptin levels with high fat mass and high blood lipid levels suggests that the challenged animals might also have had lower leptin sensitivity than the control mice (Lin et al., 2000). Similar patterns have been observed in other animals under conditions of low food availability (e.g. hibernating brown bears, *Ursus arctos horribilis*, see Rigano et al., 2017; starving humans, see Soeters and Soeters, 2012), suggesting that this might be a beneficial response to food restriction by maintaining energy availability.

Basal plasma corticosterone levels were not influenced by either housing condition or reproductive status of the males. The glucocorticoid hormones corticosterone and cortisol have pronounced effects on glucose, fat and protein metabolism and can be influenced by social and reproductive conditions, such as pair bond formation and parenthood (Carter, 1998; Uchoa et al., 2014). In humans, for example, both circulating and salivary cortisol levels were lower in men after their infants were born than during their partners' late pregnancies (Storey et al., 2000; Berg and Wynne-Edwards, 2002). Male marmosets had an increase in urinary cortisol levels after the birth of their first litter but a decrease after the birth of their second litter (Nunes et al., 2001). Prairie vole fathers had significantly lower serum corticosterone levels compared with virgins and paired males without offspring (Campbell et al., 2009). In previous studies from our laboratory, however, neither basal nor stress-induced plasma corticosterone levels differed between California mouse fathers, virgin males and males that were either vasectomized or housed with a tubally ligated female, indicating that, as in the present study, corticosterone concentrations were not influenced by reproductive status (Chauke et al., 2011; De Jong et al., 2013; Harris and Saltzman, 2013).

In many species, corticosterone levels can also be influenced by environmental challenges, such as food restriction (Heiderstadt et al., 2000; Stamp et al., 2008). In a previous study, a chronic variable stress paradigm increased basal plasma corticosterone concentrations in male California mice, and this effect did not differ between fathers, virgins and males housed with tubally ligated females (De Jong et al., 2013). In the present study, however, corticosterone levels, measured >26 h after food was returned to the challenged animals from the previous 24 h fast, did not differ between males housed under standard laboratory conditions and energetically challenging conditions. This finding was unexpected. It is possible that our challenge paradigm was not sufficiently stressful to maintain higher corticosterone levels after the food was returned. This could be related to our previous findings that California mice are relatively resistant to stress. For example, several acute stressors elicit only very transient corticosterone elevations (Harris et al., 2012), and in our chronic variable stress paradigm, we used three acute stressors per day because, in contrast to laboratory mice and rats (e.g. Cox et al., 2011; Onalapo et al., 2017), one to two stressors per day did not consistently elevate basal plasma corticosterone levels (De Jong et al., 2013; Harris et al., 2013; B.N.H., T.R. de Jong and W.S., unpublished data). Another possibility is that the challenge paradigm in the present study did alter circulating corticosterone levels, but only during some parts of the diel rhythm. A limitation of our study is that we measured corticosterone at only a single time point, which might have obscured effects of the challenge on diel rhythms.

Behavior

Both time spent immobile in the tail-suspension test and anhedonia (reduced preference for sweet solution in the saccharin preference test) are considered markers of depression-like behavior (Schrader, 1997; Cryan et al., 2005). Neither measure differed between reproductive groups or housing conditions, consistent with our previous findings (Zhao et al., 2017). In addition, virgin, non-breeding and breeding males in the present study did not differ significantly in an indicator of anxiety-like behavior (number of fecal boli produced) during tail-suspension tests or pain-sensitivity tests. Housing conditions, however, affected measures of both anxiety-like behavior and pain sensitivity. Males housed under challenging conditions had a shorter latency to nociceptive behavior, indicative of higher pain sensitivity, and produced more fecal boli during the tail-suspension test, possibly indicating greater anxiety (Archer, 1973; Flint et al., 1995; Coleman et al., 1998; Bronikowski et al., 2001; Pometlová et al., 2016).

Activation of analgesic mechanisms can be modulated by fear and anxiety; manipulations that induce fear/anxiety can provoke analgesia (i.e. reduce pain sensitivity) (Vendruscolo et al., 2004). Thus we expected that animals in the challenge condition would show lower pain sensitivity and more anxiety-like behavior during tail-suspension tests. We found, however, that while animals in the challenge condition showed higher pain sensitivity, they also showed more anxiety-like behavior (fecal boli) during tail-suspension tests. The mechanism and functional significance of this difference between mice in the two housing conditions are not known. In humans, fasting is frequently accompanied by analgesia, mood enhancement and heightened alertness (Michalsen et al., 2006; Michalsen, 2010); however, effects of food restriction on anxiety-like behaviors vary in rodents (Jahng et al., 2007; Levay et al., 2007).

$\dot{V}_{O_{2,max}}$ and correlates

$\dot{V}_{O_{2,max}}$ is a measure of maximal aerobic metabolic rate, with higher $\dot{V}_{O_{2,max}}$ indicating a greater capacity for sustained, aerobically supported exercise. Endurance exercise training can increase $\dot{V}_{O_{2,max}}$, and decrease fat and body mass, in humans and rodents (e.g. Swallow et al., 1998; Huang et al., 2005; Joyner and Coyle, 2008). While $\dot{V}_{O_{2,max}}$ typically responds positively to aerobic exercise conditioning, it does not necessarily show the same response to strength training. Strength training can, however, positively influence bone mineral density and muscle mass in humans and laboratory rodents (Layne and Nelson, 1999; Tipton and Ferrando, 2008; Coll-Risco et al., 2016; Hentschke et al., 2017). Towers similar to the ones used in the present study have been shown to increase bone mineral density in two strains of laboratory mice during a 4-week period (Mori et al., 2003; Lionikas and Blizard, 2008). In the same study, a strain \times exercise interaction in the forelimb biceps brachii muscle was also observed, but no effect of climbing exercise was found on food intake, body mass or mass of hindlimb muscles (Mori et al., 2003; Lionikas and Blizard, 2008). A similar study found that hindlimb muscles of rats housed in towered cages were heavier than those of control rats after 4 weeks of exercise, but not after 8 weeks of exercise (Notomi et al., 2001).

In the present experiment, we found that mass-adjusted $\dot{V}_{O_{2,max}}$ was lower in animals housed in cages with climbing towers than in those housed under standard conditions. In addition, challenged mice had lower hematocrit and triceps surae mass, both of which are typically positively related to $\dot{V}_{O_{2,max}}$ within species of mammals and birds (Kanstrup and Ekblom, 1984; Chappell et al., 1999, 2007). The opposite effects that we observed for animals housed

with towers, compared with studies of rats and laboratory mice, might be accounted for by the different type of exercise training that occurred and/or by our food-restriction paradigm. Previous studies found that food restriction decreased hindlimb muscle mass (Sohal et al., 2009: 6 or 23 months) in laboratory mice as well as resting oxygen consumption in rats and mice (Rothwell and Stock, 1982: 17 days; Santos-Pinto et al., 2001: 3 months; Sohal et al., 2009), but to our knowledge, effects of food restriction on $\dot{V}_{O_{2,max}}$ have not been studied. In addition, challenged mice may have compensated for the additional exercise required by the climbing towers by decreasing other activities, similar to what has been shown in laboratory rodents given access to running wheels (e.g. Copes et al., 2015).

Mothers and pups

At the time of weaning, mothers and pups in the breeding pairs had lower body mass under challenging conditions than under standard conditions, indicating that the climbing and food-restriction paradigm was costly for the females and their offspring. The effects of the challenge condition on pup lean mass and fat mass were apparently mediated by the mother's body mass, because the differences were reduced when mother's mass was included as a covariate. However, neither the number of pups weaned per litter nor the age at eye opening differed between conditions. Reproductive female rodents under food restriction or elevated energy demands can have reduced body mass compared with reproductive females housed under standard conditions (Sabau and Ferkin, 2013) and have been reported to spend less time (Smart and Preece, 1973; Smart, 1976; Marsteller and Lynch, 1987; Sabau and Ferkin, 2013), more time (Wiener et al., 1977; Masoro et al., 1982), or similar amounts of time (Crnic, 1976; König, 1989) engaging in maternal behavior. The effects of food restriction on females' milk yield or milk composition are not well studied. Because pup survival did not decline in the present study but maternal condition did, females in the challenge condition seemed to favor investment in their offspring rather than in themselves. It is also possible that the low body mass of pups in the challenge condition resulted, at least in part, from direct exposure of the pups to food restriction: California mouse pups begin eating solid food by 20 days of age (M.Z., D. Chow and W.S., unpublished observations), at least 1 week before the age of weaning. Unfortunately, we did not collect longitudinal data on mothers and pups, which would have allowed us to better evaluate this possibility.

Conclusions

Overall, our findings suggest that our physical and energetic challenge paradigm led to decreased peripheral sensitivity to both insulin and leptin, associated with increased body fat and body mass, in male California mice. In addition, males in the challenge condition showed decrements in measures related to exercise performance. For the most part, these effects of the challenge paradigm were not modulated by reproductive status. Thus we found little support for our hypothesis that subjecting males to an energetic challenge would reveal costs of fatherhood. It is certainly possible that other types or combinations of stressors or energetic challenges, such as low ambient temperature or exposure to predators, would reveal more pronounced effects of fatherhood; however, our findings, in combination with results of our previous studies (Andrew et al., 2016; Zhao et al., 2017), suggest that being a father is not necessarily particularly expensive, at least in this biparental rodent. Alternatively, fathers in this species and perhaps other biparental mammals might experience increased energetic

demands, compared with non-fathers, but these demands might be counteracted by the hormonal changes that males undergo as they transition into fatherhood (Saltzman and Ziegler, 2014).

Acknowledgements

We thank Johnny Phan, Karen Kay Mullins and Dr Akiko Sato for care of the animals; Laurie Graham for assistance with constructing the towers; Nathan Horrell, Dariana Chow, Clarissa Gomez, Sana Hadyeh, Corinne Blaine, Manparbath Kaur and Joel Raqueno for assistance with care of the animals and data collection; and two anonymous reviewers for helpful comments on an earlier draft of the manuscript.

Competing interests

The authors declare no competing or financial interests.

Author contributions

Conceptualization: M.Z., T.G., M.A.C., W.S.; Methodology: M.Z., T.G., M.A.C., J.R.A., B.N.H., W.S.; Software: M.A.C.; Validation: M.Z., B.N.H.; Formal analysis: M.Z., T.G.; Investigation: M.Z., J.R.A., B.N.H.; Resources: M.A.C., W.S.; Writing - original draft: M.Z., W.S.; Writing - review & editing: M.Z., T.G., M.A.C., J.R.A., B.N.H., W.S.; Supervision: T.G., W.S.; Project administration: W.S.; Funding acquisition: T.G., M.A.C., W.S.

Funding

This research was supported by National Institutes of Health (R21HD075021) and National Science Foundation (IOS1256572). Deposited in PMC for release after 12 months.

References

- Achenbach, G. G. and Snowdon, C. T. (2002). Costs of caregiving: weight loss in captive adult male cotton-top tamarins (*Saguinus oedipus*) following the birth of infants. *Int. J. Primatol.* **23**, 179-189.
- Andrew, J. R., Saltzman, W., Chappell, M. A. and Garland, T. Jr (2016). Consequences of fatherhood in the biparental California mouse (*Peromyscus californicus*): locomotor performance, metabolic rate, and organ masses. *Physiol. Biochem. Zool.* **89**, 130-140.
- Archer, J. (1973). Tests for emotionality in rats and mice: a review. *Anim. Behav.* **21**, 205-235.
- Bardi, M., Franssen, C. L., Hampton, J. E., Shea, E. A., Fanean, A. P. and Lambert, K. G. (2011). Paternal experience and stress responses in California mice (*Peromyscus californicus*). *Comp. Med.* **61**, 20.
- Berg, S. J. and Wynne-Edwards, K. E. (2002). Salivary hormone concentrations in mothers and fathers becoming parents are not correlated. *Horm. Behav.* **42**, 424-436.
- Borai, A., Livingstone, C., Kaddam, I. and Ferns, G. (2011). Selection of the appropriate method for the assessment of insulin resistance. *BMC Med. Res. Methodol.* **11**, 158.
- Bowe, J. E., Franklin, Z. J., Hauge-Evans, A. C., King, A. J., Persaud, S. J. and Jones, P. M. (2014). Metabolic phenotyping guidelines: assessing glucose homeostasis in rodent models. *J. Endocrinol.* **222**, G13-G25.
- Bredy, T. W., Brown, R. E. and Meaney, M. J. (2007). Effect of resource availability on biparental care, and offspring neural and behavioral development in the California mouse (*Peromyscus californicus*). *Eur. J. Neurosci.* **25**, 567-575.
- Bronikowski, A. M., Carter, P. A., Swallow, J. G., Girard, I. A., Rhodes, J. S. and Garland, T., Jr (2001). Open-field behavior of house mice selectively bred for high voluntary wheel-running. *Behav. Genet.* **31**, 309-316.
- Brown, R. E., Murdoch, T., Murphy, P. R. and Moger, W. H. (1995). Hormonal responses of male gerbils to stimuli from their mate and pups. *Horm. Behav.* **29**, 474-491.
- Campbell, J. C., Laugero, K. D., Van Westerhuyzen, J. A., Hostetler, C. M., Cohen, J. D. and Bales, K. L. (2009). Costs of pair-bonding and paternal care in male prairie voles (*Microtus ochrogaster*). *Physiol. Behav.* **98**, 367-373.
- Cantoni, D. and Brown, R. E. (1997). Paternal investment and reproductive success in the California mouse, *Peromyscus californicus*. *Anim. Behav.* **54**, 377-386.
- Carter, C. S. (1998). Neuroendocrine perspectives on social attachment and love. *Psychoneuroendocrinol.* **23**, 779-818.
- Carvas, J. M., Vukolic, A., Yepuri, G., Xiong, Y., Popp, K., Schmutz, I., Chappuis, S., Albrecht, U., Ming, X.-F. and Montani, J.-P. (2012). Period2 gene mutant mice show compromised insulin-mediated endothelial nitric oxide release and altered glucose homeostasis. *Front. Physiol.* **3**, 337.
- Chappell, M. A. and Dlugosz, E. M. (2009). Aerobic capacity and running performance across a 1.6 km altitude difference in two sciurid rodents. *J. Exp. Biol.* **212**, 610-619.
- Chappell, M. A., Bech, C. and Buttemer, W. A. (1999). The relationship of central and peripheral organ masses to aerobic performance variation in house sparrows. *J. Exp. Biol.* **202**, 2269-2279.

- Chappell, M. A., Garland, T., Jr, Robertson, G. F. and Saltzman, W. (2007). Relationships among running performance, aerobic physiology and organ mass in male Mongolian gerbils. *J. Exp. Biol.* **210**, 4179-4197.
- Chauke, M., Malisch, J. L., Robinson, C., de Jong, T. R. and Saltzman, W. (2011). Effects of reproductive status on behavioral and endocrine responses to acute stress in a biparental rodent, the California mouse (*Peromyscus californicus*). *Horm. Behav.* **60**, 128-138.
- Chen, W., Balland, E. and Cowley, M. A. (2017). Hypothalamic insulin resistance in obesity: effects on glucose homeostasis. *Neuroendocrinology* **104**, 364-381.
- Coleman, M. A., Garland, T., Jr, Marler, C. A., Newton, S. S., Swallow, J. G. and Carter, P. A. (1998). Glucocorticoid response to forced exercise in laboratory house mice (*Mus domesticus*). *Physiol. Behav.* **63**, 279-285.
- Coll-Risco, I., Aparicio, V. A., Nebot, E., Camiletti-Moirón, D., Martínez, R., Kapravelou, G., López-Jurado, M., Porres, J. M. and Aranda, P. (2016). Effects of interval aerobic training combined with strength exercise on body composition, glycaemic and lipid profile and aerobic capacity of obese rats. *J. Sports Sci.* **34**, 1452-1460.
- Colman, R. J., Nam, G., Huchthausen, L., Mulligan, J. D. and Saupe, K. W. (2007). Energy restriction-induced changes in body composition are age specific in mice. *J. Nutr.* **137**, 2247-2251.
- Copes, L. E., Schutz, H., Dlugosz, E. M., Acosta, W., Chappell, M. A. and Garland, T. Jr (2015). Effects of voluntary exercise on spontaneous physical activity and food consumption in mice: results from an artificial selection experiment. *Physiol. Behav.* **149**, 86-94.
- Cox, B. M., Alsawah, F., McNeill, P. C., Galloway, M. P. and Perrine, S. A. (2011). Neurochemical, hormonal, and behavioral effects of chronic unpredictable stress in the rat. *Behav. Brain Res.* **220**, 106-111.
- Crníc, L. S. (1976). Effects of infantile undernutrition on adult learning in rats: methodological and design problems. *Psychol. Bull.* **83**, 715.
- Croce, R. A., Vaddiraju, S. S., Kondo, J., Wang, Y., Zuo, L., Zhu, K., Islam, S. K., Burgess, D. J., Papadimitrakopoulos, F. and Jain, F. C. (2013). A miniaturized transcutaneous system for continuous glucose monitoring. *Biomed. Microdevices* **15**, 151-160.
- Cryan, J. F., Mombereau, C. and Vassout, A. (2005). The tail suspension test as a model for assessing antidepressant activity: review of pharmacological and genetic studies in mice. *Neurosci. Biobehav. Rev.* **29**, 571-625.
- De Jong, T. R., Harris, B. N., Perea-Rodriguez, J. P. and Saltzman, W. (2013). Physiological and neuroendocrine responses to chronic variable stress in male California mice (*Peromyscus californicus*): influence of social environment and paternal state. *Psychoneuroendocrinology* **38**, 2023-2033.
- Dudley, D. (1974). Paternal behavior in the California mouse, *Peromyscus californicus*. *Behav. Biol.* **11**, 247-252.
- Duffy, P. H., Feuers, R. J., Leakey, J. A., Nakamura, K. D., Turturro, A. and Hart, R. W. (1989). Effect of chronic caloric restriction on physiological variables related to energy metabolism in the male Fischer 344 rat. *Mech. Ageing Dev.* **48**, 117-133.
- Faul, F., Erdfelder, E., Buchner, A. and Lang, A.-G. (2009). Statistical power analyses using G*Power 3.1: tests for correlation and regression analyses. *Behav. Res. Methods* **41**, 1149-1160.
- Faulks, S. C., Turner, N., Elise, P. L. and Hulbert, A. J. (2006). Calorie restriction in mice: effects on body composition, daily activity, metabolic rate, mitochondrial reactive oxygen species production, and membrane fatty acid composition. *J. Gerontol. A. Biol. Sci. Med. Sci.* **61**, 781-794.
- Flint, J., Corley, R., DeFries, J. C., Fulker, D. W., Gray, J. A., Miller, S. and Collins, A. C. (1995). A simple genetic basis for a complex psychological trait in laboratory mice. *Science* **269**, 1432-1435.
- Fonken, L. K., Workman, J. L., Walton, J. C., Weil, Z. M., Morris, J. S., Haim, A. and Nelson, R. J. (2010). Light at night increases body mass by shifting the time of food intake. *Proc. Natl Acad. Sci. USA* **107**, 18664-18669.
- Gibson, E. L. (2006). Emotional influences on food choice: sensory, physiological and psychological pathways. *Physiol. Behav.* **89**, 53-61.
- Gubernick, D. J. (1988). Reproduction in the California mouse, *Peromyscus californicus*. *J. Mammal.* **69**, 857-860.
- Gubernick, D. J. and Nelson, R. J. (1989). Prolactin and paternal behavior in the biparental California mouse, *Peromyscus californicus*. *Horm. Behav.* **23**, 203-210.
- Gubernick, D. J. and Teferi, T. (2000). Adaptive significance of male parental care in a monogamous mammal. *Proc. Biol. Sci.* **267**, 147-150.
- Gubernick, D. J., Wright, S. L. and Brown, R. E. (1993). The significance of father's presence for offspring survival in the monogamous California mouse, *Peromyscus californicus*. *Anim. Behav.* **46**, 539-546.
- Hammad, S. M., Powell-Braxton, L., Otvos, J. D., Eldridge, L., Won, W. and Lyons, T. J. (2003). Lipoprotein subclass profiles of hyperlipidemic diabetic mice measured by nuclear magnetic resonance spectroscopy. *Metabolism* **52**, 916-921.
- Harris, B. N., Perea-Rodriguez, J. P. and Saltzman, W. (2011). Acute effects of corticosterone injection on paternal behavior in California mouse (*Peromyscus californicus*) fathers. *Horm. Behav.* **60**, 666-675.
- Harris, B. N. and Saltzman, W. (2013). Effect of reproductive status on hypothalamic-pituitary-adrenal (HPA) activity and reactivity in male California mice (*Peromyscus californicus*). *Physiol. Behav.* **112**, 70-76.
- Harris, B. N., Saltzman, W., de Jong, T. R. and Milnes, M. R. (2012). Hypothalamic-pituitary-adrenal (HPA) axis function in the California mouse (*Peromyscus californicus*): changes in baseline activity, reactivity, and fecal excretion of glucocorticoids across the diurnal cycle. *Gen. Comp. Endocrinol.* **179**, 436-450.
- Harris, B. N., de Jong, T. R., Yang, V. and Saltzman, W. (2013). Chronic variable stress in fathers alters paternal and social behavior but not pup development in the biparental California mouse (*Peromyscus californicus*). *Horm. Behav.* **64**, 799-811.
- Heiderstadt, K. M., McLaughlin, R. M., Wrighe, D. C., Walker, S. E. and Gomez-Sanchez, C. E. (2000). The effect of chronic food and water restriction on open-field behaviour and serum corticosterone levels in rats. *Lab. Anim.* **34**, 20-28.
- Hentschke, V. S., Capalunga, L., Rossato, D. D., Perini, J. L., Alves, J. P., Stefani, G. P., Karsten, M., Pontes, M. and Dal Lago, P. (2017). Maximal oxygen uptake and exercise tolerance are improved in rats with heart failure subjected to low-level laser therapy associated with resistance training. *Lasers Med. Sci.* **32**, 73-85.
- Huang, G., Gibson, C. A., Tran, Z. V. and Osness, W. H. (2005). Controlled endurance exercise training and V_O2max changes in older adults: a meta-analysis. *Prev. Cardiol.* **8**, 217-225.
- Idelman, S. (1978). The structure of the mammalian adrenal cortex. In *General, Comparative and Clinical Endocrinology of the Adrenal Cortex* (ed. I. C. Jones and I. W. Henderson), pp. 1-180. New York: Academic Press.
- Jahng, J. W., Kim, J. G., Kim, H. J., Kim, B.-T., Kang, D.-W. and Lee, J.-H. (2007). Chronic food restriction in young rats results in depression- and anxiety-like behaviors with decreased expression of serotonin reuptake transporter. *Brain Res.* **1150**, 100-107.
- Joynt, M. J. and Coyle, E. F. (2008). Endurance exercise performance: the physiology of champions. *J. Physiol.* **586**, 35-44.
- Kanstrup, I. and Ekblom, B. (1984). Blood volume and hemoglobin concentration as determinants of maximal aerobic power. *Med. Sci. Sports Exerc.* **16**, 256-262.
- Kenkel, W. M., Suboc, G. and Carter, C. S. (2014). Autonomic, behavioral and neuroendocrine correlates of paternal behavior in male prairie voles. *Physiol. Behav.* **128**, 252-259.
- König, B. (1989). Kin recognition and maternal care under restricted feeding in house mice (*Mus domesticus*). *Ethology* **82**, 328-343.
- Koteja, P., Carter, P. A., Swallow, J. G. and Garland, T. Jr (2003). Food wasting by house mice: variation among individuals, families, and genetic lines. *Physiol. Behav.* **80**, 375-383.
- Layne, J. E. and Nelson, M. E. (1999). The effects of progressive resistance training on bone density: a review. *Med. Sci. Sports Exerc.* **31**, 25-30.
- Levay, E. A., Govic, A., Penman, J., Paolini, A. G. and Kent, S. (2007). Effects of adult-onset calorie restriction on anxiety-like behavior in rats. *Physiol. Behav.* **92**, 889-896.
- Li, X., Cope, M. B., Johnson, M. S., Smith, D. L., Jr and Nagy, T. R. (2010). Mild calorie restriction induces fat accumulation in female C57BL/6J mice. *Obesity* **18**, 456-462.
- Lieberwirth, C., Wang, Y., Jia, X., Liu, Y. and Wang, Z. (2013). Fatherhood reduces the survival of adult-generated cells and affects various types of behavior in the prairie vole (*Microtus ochrogaster*). *Eur. J. Neurosci.* **38**, 3345-3355.
- Lin, S., Thomas, T. C., Storlien, L. H. and Huang, X. F. (2000). Development of high fat diet-induced obesity and leptin resistance in C57BL/6J mice. *Int. J. Obes.* **24**, 639.
- Lionikas, A. and Blizard, D. A. (2008). Diverse effects of stanzolol in C57BL/6J and A/J mouse strains. *Eur. J. Appl. Physiol.* **103**, 333-341.
- Malisch, J. L., Breuner, C. W., Kolb, E. M., Wada, H., Hannon, R. M., Chappell, M. A., Middleton, K. M. and Garland, T. Jr (2009). Behavioral despair and home-cage activity in mice with chronically elevated baseline corticosterone concentrations. *Behav. Genet.* **39**, 192-201.
- Marsteller, F. A. and Lynch, C. B. (1987). Reproductive responses to variation in temperature and food supply by house mice: II. Lactation. *Biol. Reprod.* **37**, 844-850.
- Masoro, E. J., Yu, B. P. and Bertrand, H. A. (1982). Action of food restriction in delaying the aging process. *Proc. Natl Acad. Sci. USA* **79**, 4239-4241.
- McPhee, M. E. (2004). Generations in captivity increases behavioral variance: considerations for captive breeding and reintroduction programs. *Biol. Conserv.* **115**, 71-77.
- Meek, T. H., Eisenmann, J. C., Keeney, B. K., Hannon, R. M., Dlugosz, E. M. and Garland, T. (2014). Effects of early-life exposure to Western diet and wheel access on metabolic syndrome profiles in mice bred for high voluntary exercise. *Genes Brain Behav.* **13**, 322-332.
- Michalsen, A. (2010). Prolonged fasting as a method of mood enhancement in chronic pain syndromes: a review of clinical evidence and mechanisms. *Curr. Pain Headache Rep.* **14**, 80-87.
- Michalsen, A., Kuhlmann, M. K., Lütcke, R., Bäcker, M., Langhorst, J. and Dobos, G. J. (2006). Prolonged fasting in patients with chronic pain syndromes leads to late mood-enhancement not related to weight loss and fasting-induced leptin depletion. *Nutr. Neurosci.* **9**, 195-200.
- Mori, T., Okimoto, N., Sakai, A., Okazaki, Y., Nakura, N., Notomi, T. and Nakamura, T. (2003). Climbing exercise increases bone mass and trabecular

- bone turnover through transient regulation of marrow osteogenic and osteoclastogenic potentials in mice. *J. Bone Miner. Res.* **18**, 2002-2009.
- Notomi, T., Okimoto, N., Okazaki, Y., Tanaka, Y., Nakamura, T. and Suzuki, M.** (2001). Effects of tower climbing exercise on bone mass, strength, and turnover in growing rats. *J. Bone Miner. Res.* **16**, 166-174.
- Nunes, S., Fite, J. E., Patera, K. J. and French, J. A.** (2001). Interactions among paternal behavior, steroid hormones, and parental experience in male marmosets (*Callithrix kuhlii*). *Horm. Behav.* **39**, 70-82.
- Onaolapo, A. Y., Adebayo, A. N. and Onaolapo, O. J.** (2017). Exogenous daytime melatonin modulates response of adolescent mice in a repeated unpredictable stress paradigm. *Naunyn-Schmiedeberg's Arch. Pharmacol.* **390**, 149-161.
- Pecoraro, N., Reyes, F., Gomez, F., Bhargava, A. and Dallman, M. F.** (2004). Chronic stress promotes palatable feeding, which reduces signs of stress: feedforward and feedback effects of chronic stress. *Endocrinology* **145**, 3754-3762.
- Perea-Rodriguez, J. P., Takahashi, E. Y., Amador, T. M., Hao, R. C., Saltzman, W. and Trainor, B. C.** (2015). Effects of reproductive experience on central expression of progesterone, oestrogen α , oxytocin and vasopressin receptor mRNA in male California mice (*Peromyscus californicus*). *J. Neuroendocrinol.* **27**, 245-252.
- Pometlová, M., Yamamotová, A., Nohejlová, K. and Šlamberová, R.** (2016). Can anxiety tested in the elevated plus-maze be related to nociception sensitivity in adult male rats? *Prague Med. Rep.* **117**, 185-197.
- Reburn, C. J. and Wynne-Edwards, K. E.** (1999). Hormonal changes in males of a naturally biparental and a uniparental mammal. *Horm. Behav.* **35**, 163-176.
- Rigano, K. S., Gehring, J. L., Hutzenbiler, B. E., Chen, A. V., Nelson, O. L., Vella, C. A., Robbins, C. T. and Jansen, H. T.** (2017). Life in the fat lane: seasonal regulation of insulin sensitivity, food intake, and adipose biology in brown bears. *J. Comp. Physiol. B.* **187**, 649-676.
- Rothwell, N. J. and Stock, M. J.** (1982). Effect of chronic food restriction on energy balance, thermogenic capacity, and brown-adipose-tissue activity in the rat. *Biosci. Rep.* **2**, 543-549.
- Sabau, R. M. and Ferkin, M. H.** (2013). Food restriction affects the maternal behavior provided by female meadow voles (*Microtus pennsylvanicus*). *J. Mammal.* **94**, 1068-1076.
- Saltzman, W. and Ziegler, T. E.** (2014). Functional significance of hormonal changes in mammalian fathers. *J. Neuroendocrinol.* **26**, 685-696.
- Saltzman, W., Harris, B. N., de Jong, T. R., Nguyen, P. P., Cho, J. T., Hernandez, M. and Perea-Rodriguez, J. P.** (2015). Effects of parental status on male body mass in the monogamous, biparental California mouse. *J. Zool.* **296**, 23-29.
- Santos-Pinto, F. N., Luz, J. and Griggio, M. A.** (2001). Energy expenditure of rats subjected to long-term food restriction. *Int. J. Food Sci. Nutr.* **52**, 193-200.
- Santosa, S. and Jensen, M. D.** (2015). The sexual dimorphism of lipid kinetics in humans. *Front. Endocrinol.* **6**, 103.
- Schrader, G. D.** (1997). Does anhedonia correlate with depression severity in chronic depression? *Compr. Psychiatry* **38**, 260-263.
- Shen, M. and Shi, H.** (2015). Sex hormones and their receptors regulate liver energy homeostasis. *Int. J. Endocrinol.* **2015**, 294278.
- Slattery, D. A. and Neumann, I. D.** (2008). No stress please! Mechanisms of stress hyporesponsiveness of the maternal brain. *J. Physiol.* **586**, 377-385.
- Smart, J. L.** (1976). Maternal behaviour of undernourished mother rats towards well fed and underfed young. *Physiol. Behav.* **16**, 147-149.
- Smart, J. L. and Preece, J.** (1973). Maternal behaviour of undernourished mother rats. *Anim. Behav.* **21**, 613-619.
- Soeters, M. R. and Soeters, P. B.** (2012). The evolutionary benefit of insulin resistance. *Clin. Nutr.* **31**, 1002-1007.
- Sohal, R. S., Ferguson, M., Sohal, B. H. and Forster, M. J.** (2009). Life span extension in mice by food restriction depends on an energy imbalance. *J. Nutr.* **139**, 533-539.
- Speakman, J. R.** (2008). The physiological costs of reproduction in small mammals. *Philos. Trans. R. Soc. Lond. B. Biol. Sci.* **363**, 375-398.
- Stamp, J. A., Mashoodh, R., van Kampen, J. M. and Robertson, H. A.** (2008). Food restriction enhances peak corticosterone levels, cocaine-induced locomotor activity, and Δ FosB expression in the nucleus accumbens of the rat. *Brain Res.* **1204**, 94-101.
- Stedman, C., Liddle, C., Coulter, S., Sonoda, J., Alvarez, J. G., Evans, R. M. and Downes, M.** (2006). Benefit of farnesoid X receptor inhibition in obstructive cholestasis. *Proc. Natl Acad. Sci. USA* **103**, 11323-11328.
- Storey, A. E., Walsh, C. J., Quinton, R. L. and Wynne-Edwards, K. E.** (2000). Hormonal correlates of paternal responsiveness in new and expectant fathers. *Evol. Hum. Behav.* **21**, 79-95.
- Swallow, J. G., Garland, T., Jr, Carter, P. A., Zhan, W.-Z. and Sieck, G. C.** (1998). Effects of voluntary activity and genetic selection on aerobic capacity in house mice (*Mus domesticus*). *J. Appl. Physiol.* **84**, 69-76.
- Tipton, K. D. and Ferrando, A. A.** (2008). Improving muscle mass: response of muscle metabolism to exercise, nutrition and anabolic agents. *Essays Biochem.* **44**, 85-98.
- Trainor, B. C., Bird, I. M., Alday, N. A., Schlinger, B. A. and Marler, C. A.** (2003). Variation in aromatase activity in the medial preoptic area and plasma progesterone is associated with the onset of paternal behavior. *Neuroendocrinology* **78**, 36-44.
- Uchoa, E. T., Aguilera, G., Herman, J. P., Fiedler, J. L., Deak, T. and de Sousa, M. B. C.** (2014). Novel aspects of glucocorticoid actions. *J. Neuroendocrinol.* **26**, 557-572.
- Varlamov, O., Bethea, C. L. and Roberts, C. T.** (2015). Sex-specific differences in lipid and glucose metabolism. *Front. Endocrinol.* **5**, 241.
- Vendruscolo, L. F., Pamplona, F. A. and Takahashi, R. N.** (2004). Strain and sex differences in the expression of nociceptive behavior and stress-induced analgesia in rats. *Brain Res.* **1030**, 277-283.
- Wiener, S. G., Fitzpatrick, K. M., Levin, R., Smotherman, W. P. and Levine, S.** (1977). Alternations in the maternal behavior of rats rearing malnourished offspring. *Dev. Psychobiol.* **10**, 243-254.
- Woodside, B., Budin, R., Wellman, M. K. and Abizaid, A.** (2012). Many mouths to feed: the control of food intake during lactation. *Front. Neuroendocrinol.* **33**, 301-314.
- Wright, S. L. and Brown, R. E.** (2002). The importance of paternal care on pup survival and pup growth in *Peromyscus californicus* when required to work for food. *Behav. Process.* **60**, 41-52.
- Zhao, M., Garland, T., Jr, Chappell, M. A., Andrew, J. R. and Saltzman, W.** (2017). Metabolic and affective consequences of fatherhood in male California mice. *Physiol. Behav.* **177**, 57-67.
- Ziegler, T. E. and Snowdon, C. T.** (2000). Preparental hormone levels and parenting experience in male cotton-top tamarins, *Saguinus oedipus*. *Horm. Behav.* **38**, 159-167.
- Ziegler, T. E., Prudom, S. L., Schultz-Darken, N. J., Kurian, A. V. and Snowdon, C. T.** (2006). Pregnancy weight gain: marmoset and tamarin dads show it too. *Biol. Lett.* **2**, 181-183.
- Ziegler, T. E., Prudom, S. L., Zahed, S. R., Parlow, A. F. and Wegner, F.** (2009). Prolactin's mediative role in male parenting in parentally experienced marmosets (*Callithrix jacchus*). *Horm. Behav.* **56**, 436-443.